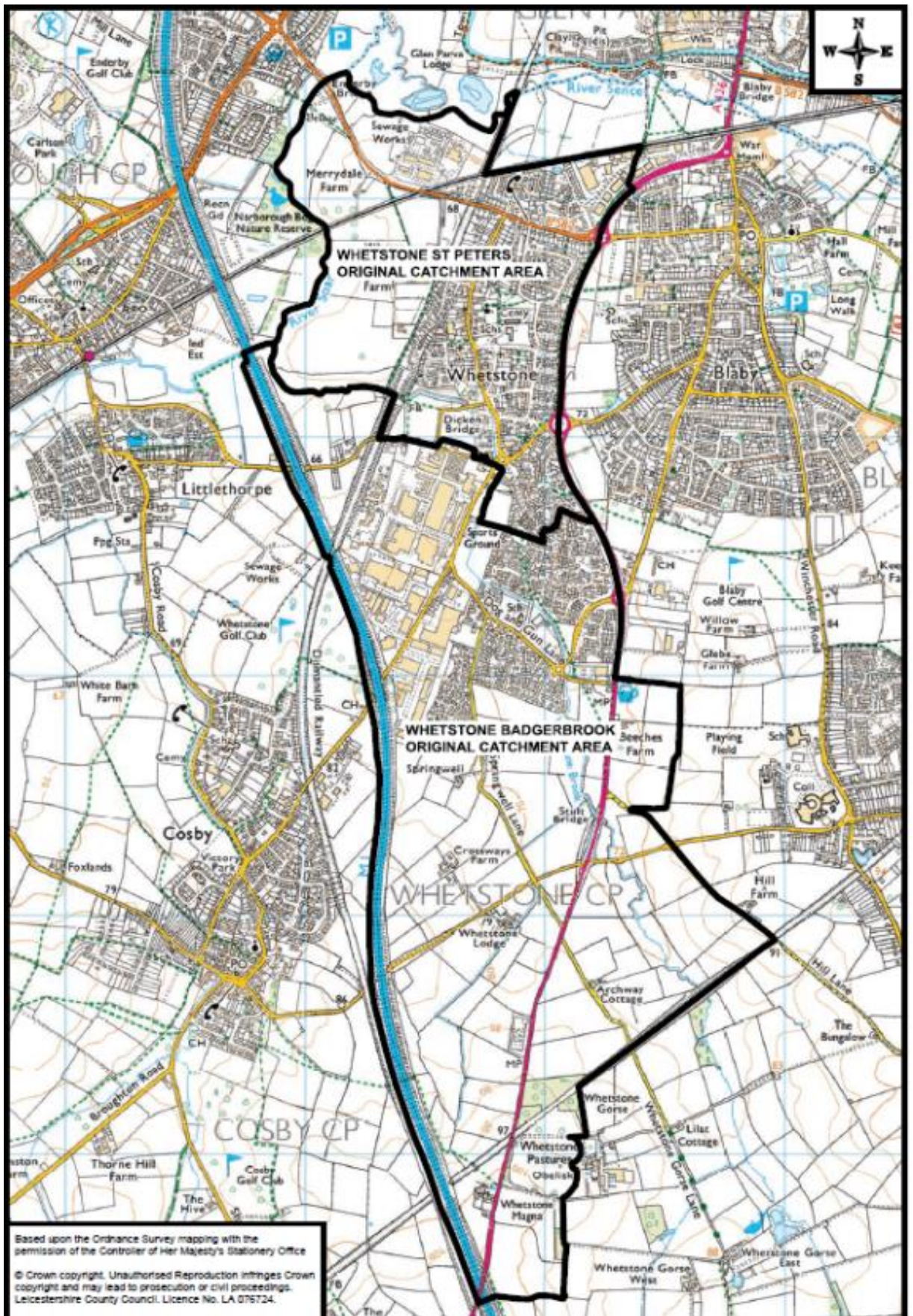
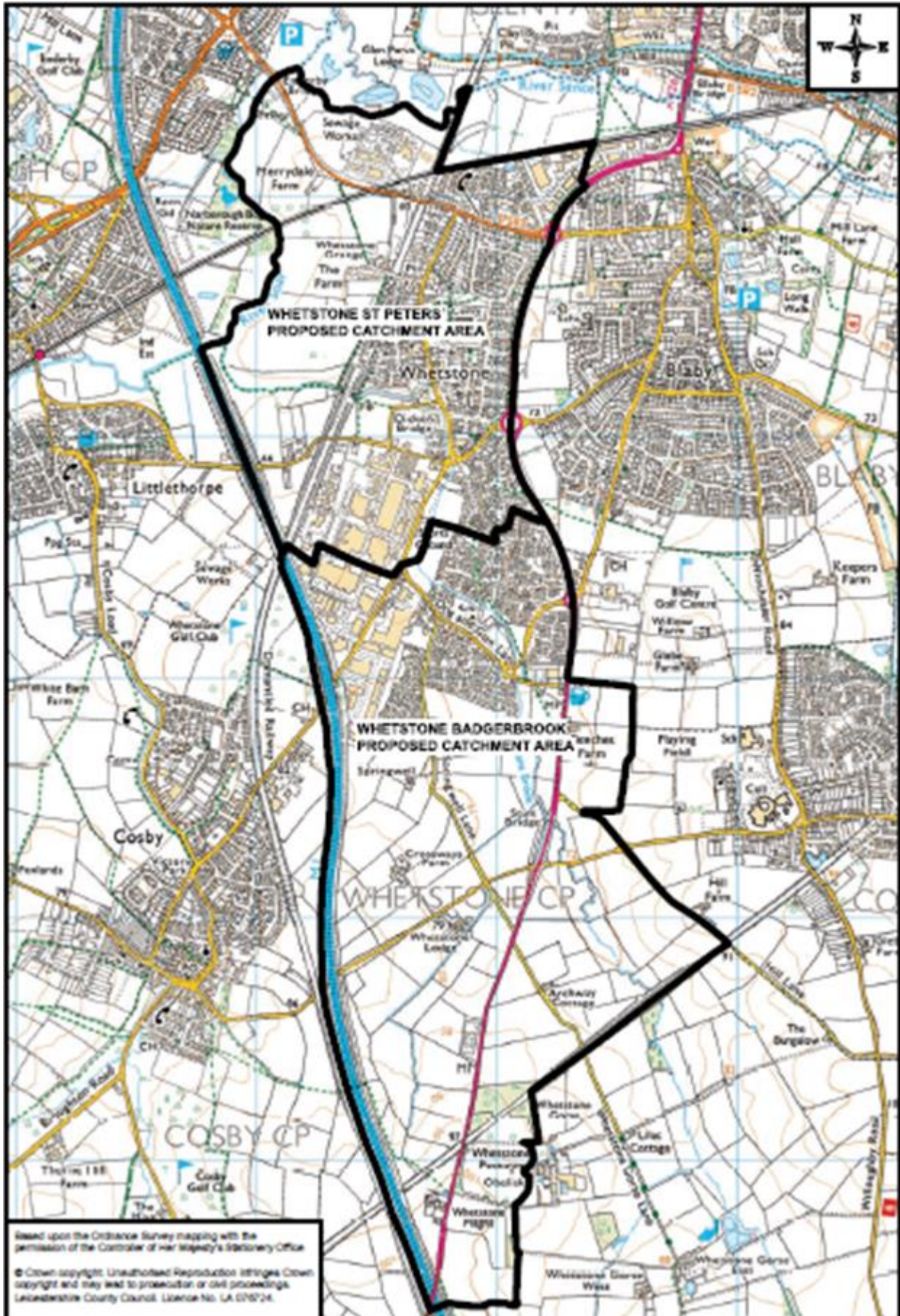


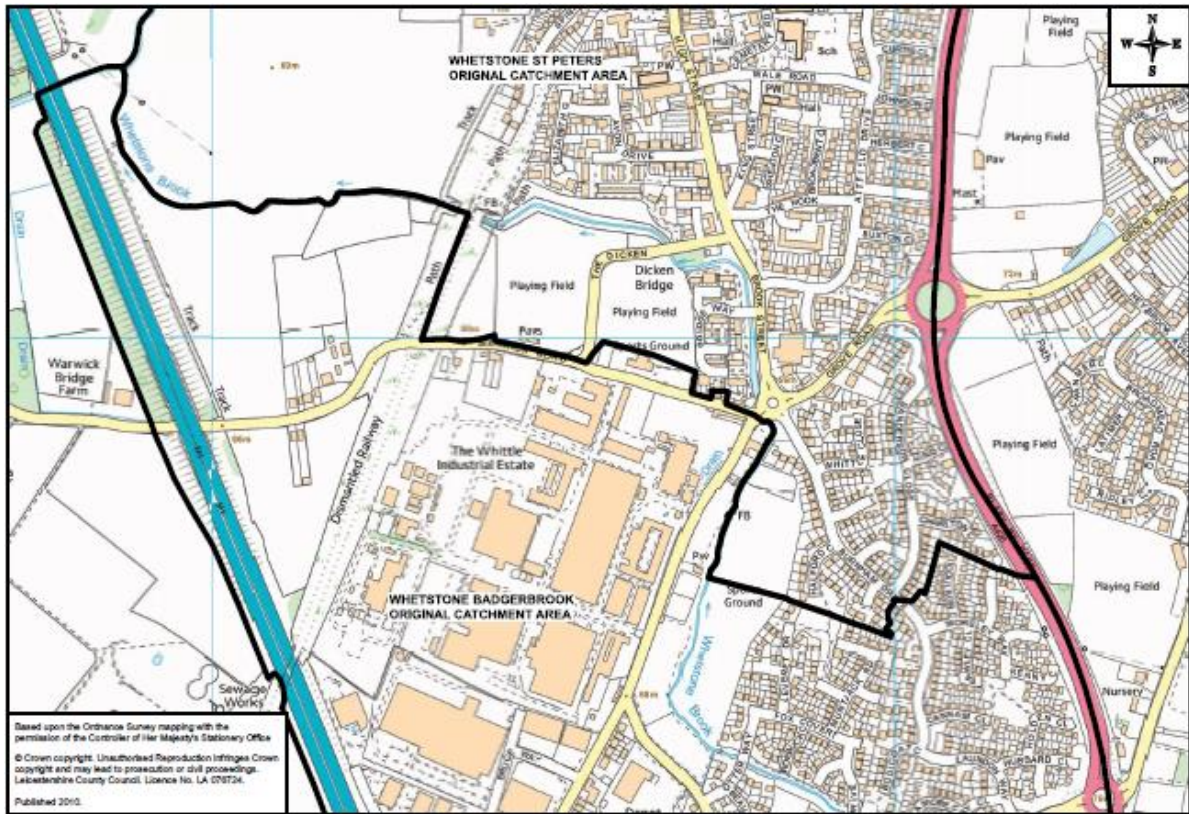
Current Badgerbrook Primary School catchment boundary



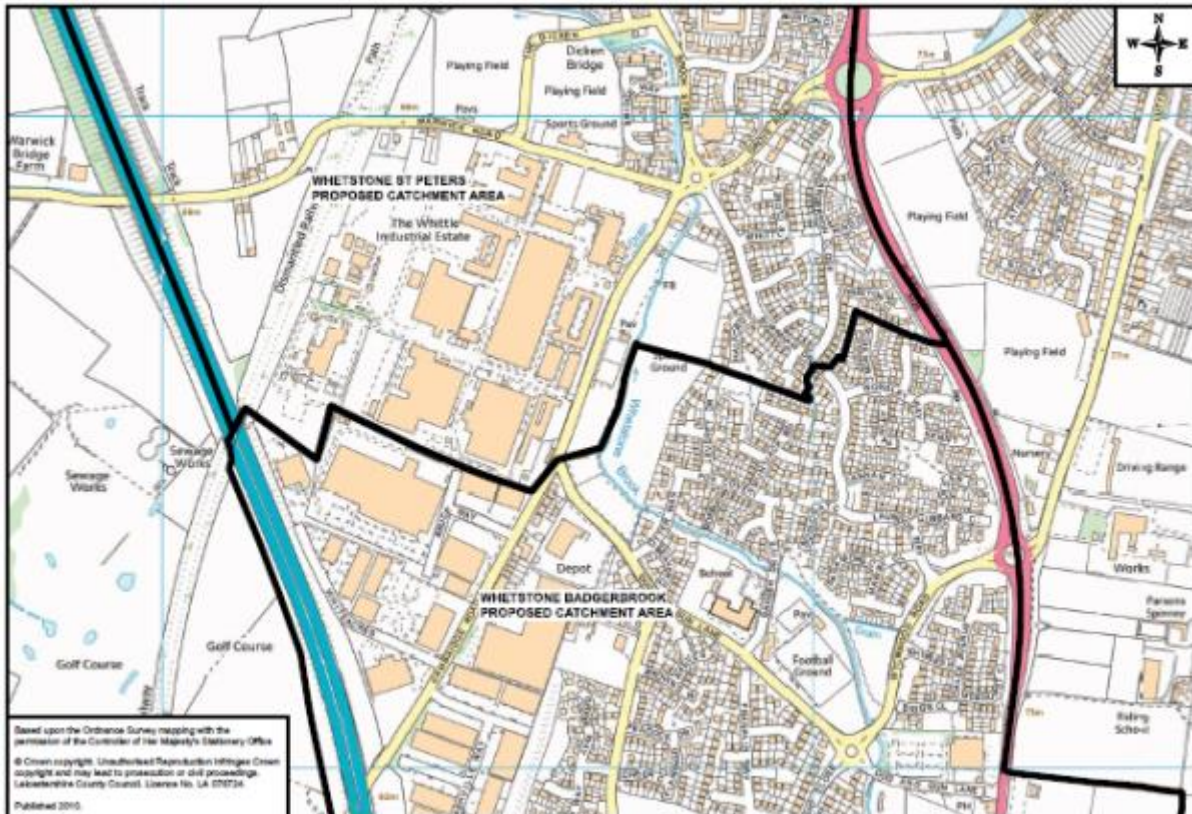
Proposed Badgerbrook Primary School catchment boundary:



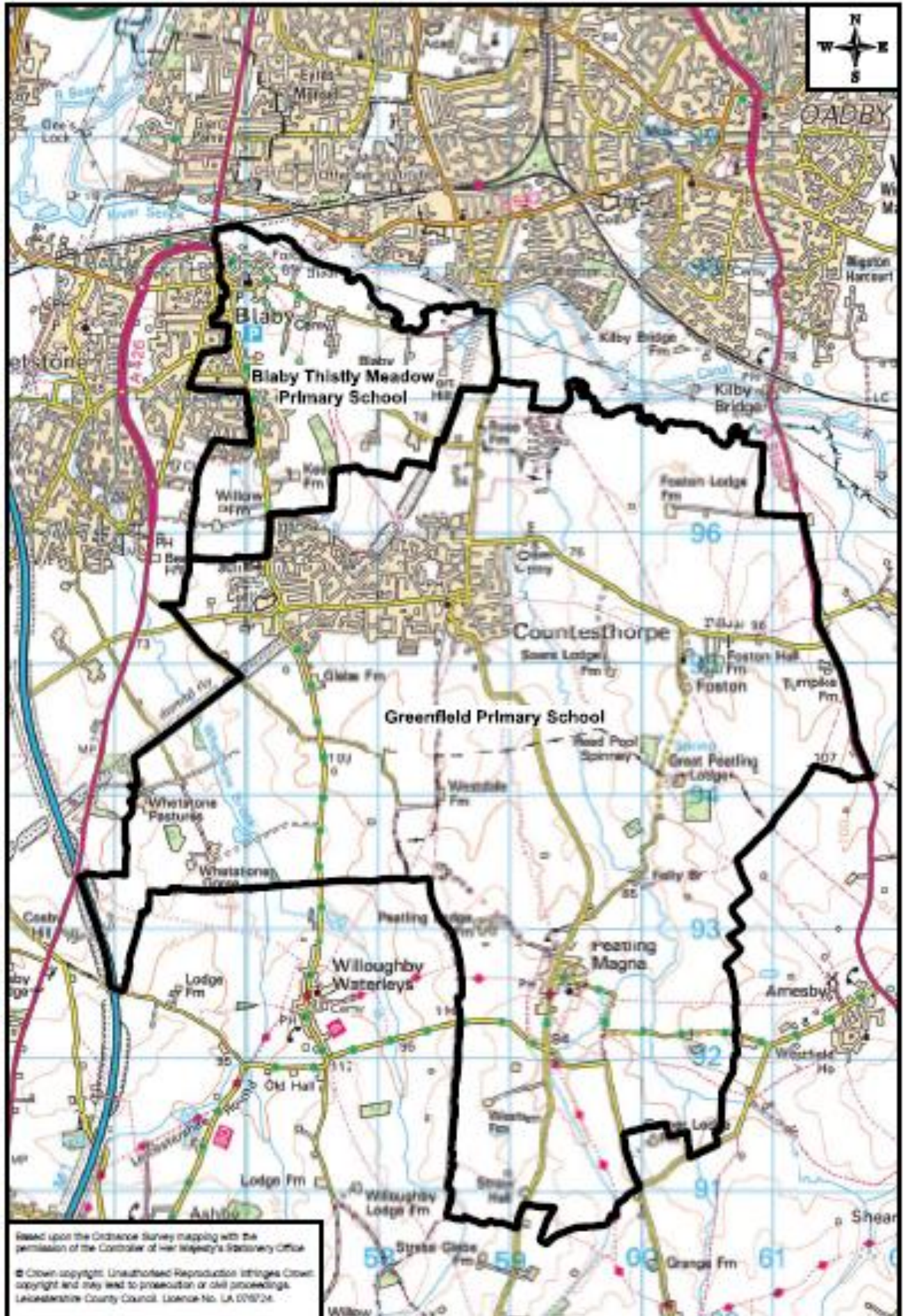
Zoom in on current catchments:



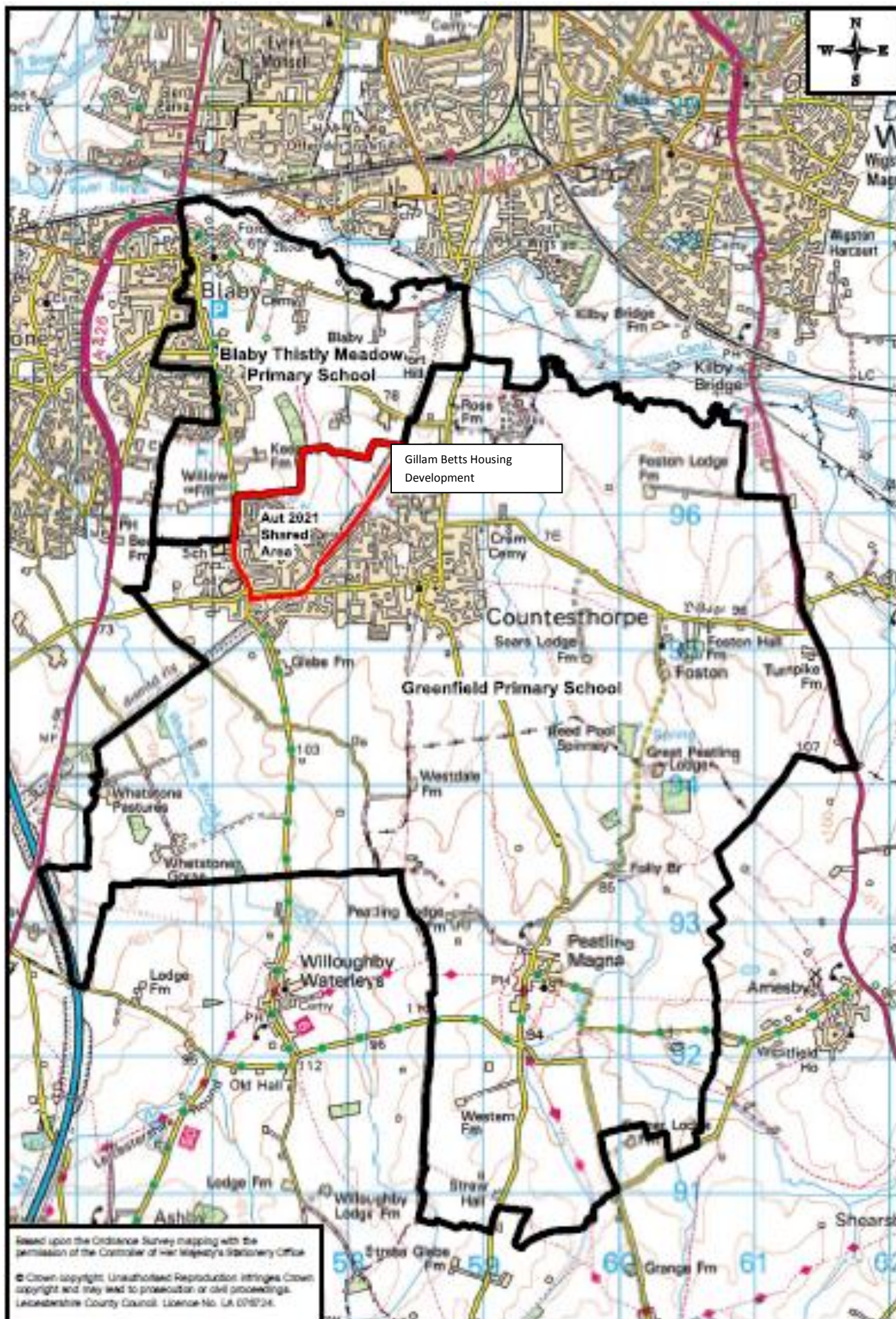
Zoom in on proposed catchment line amendment:



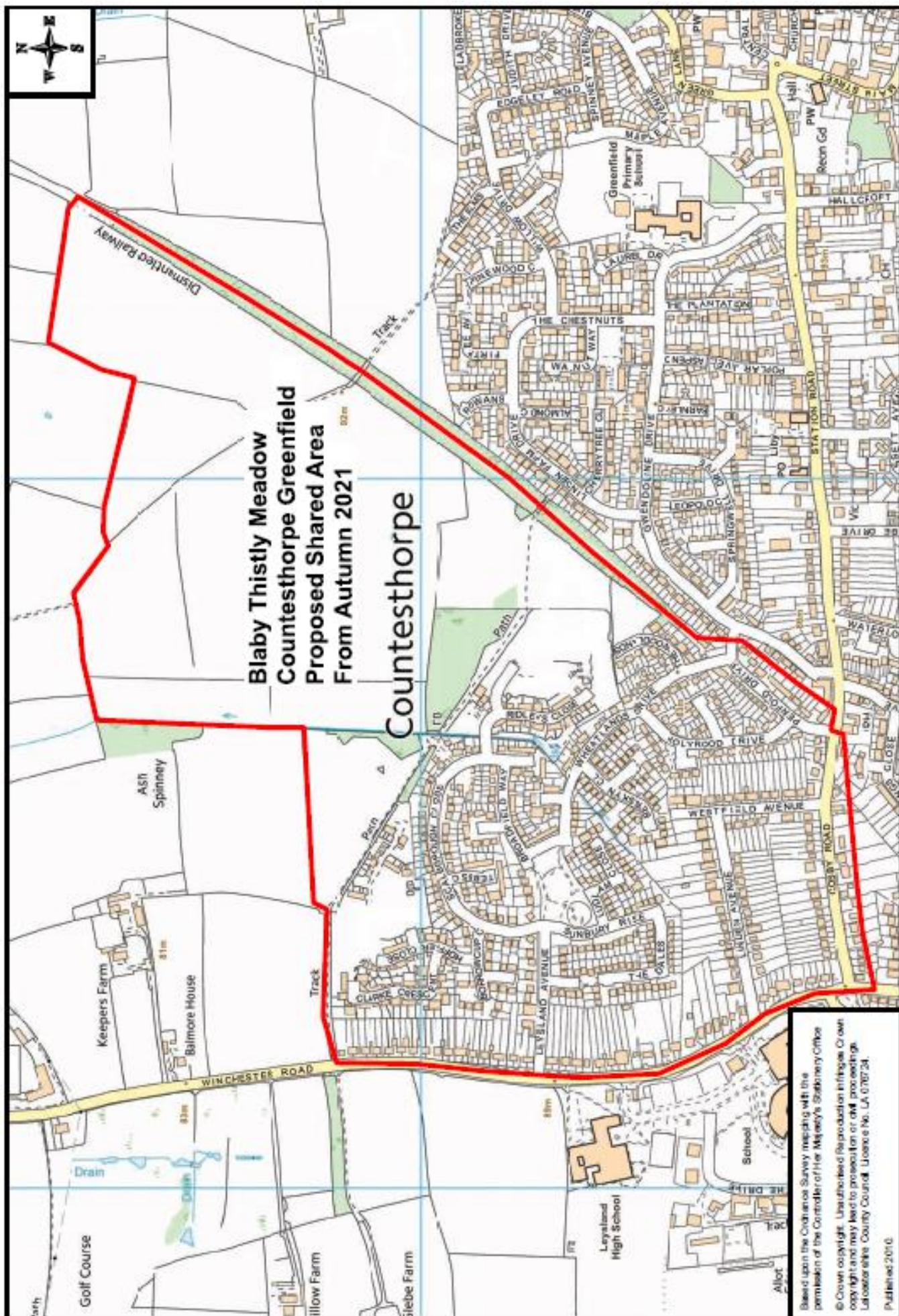
Current Catchment areas: Greenfield and Thistly Meadow Primary Schools



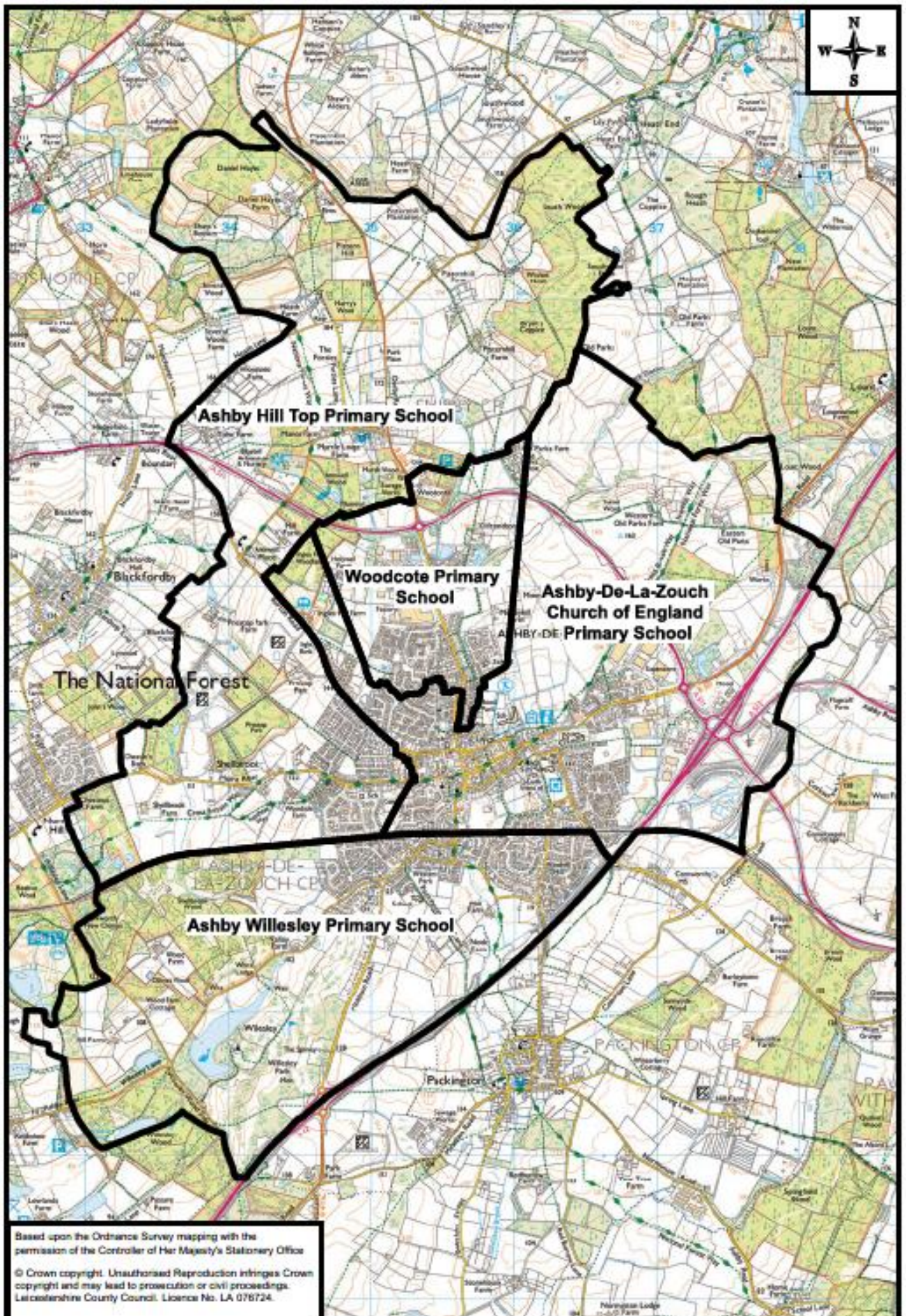
Proposed shared catchment area highlighted in red, children in this area will have equal joint catchment rights to either school:



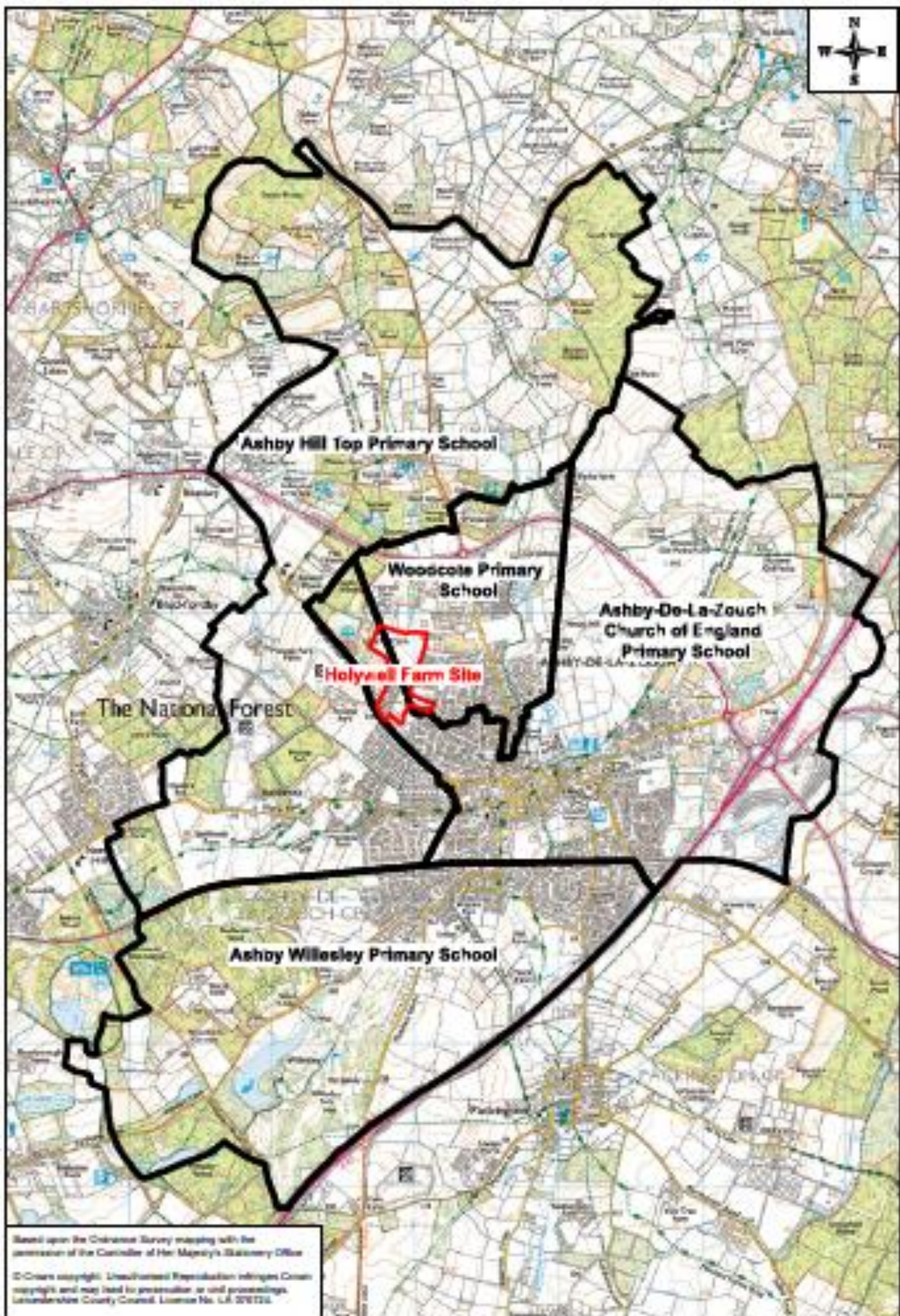
Zoom-in of merged area:



Current Catchment breakdown in Ashby

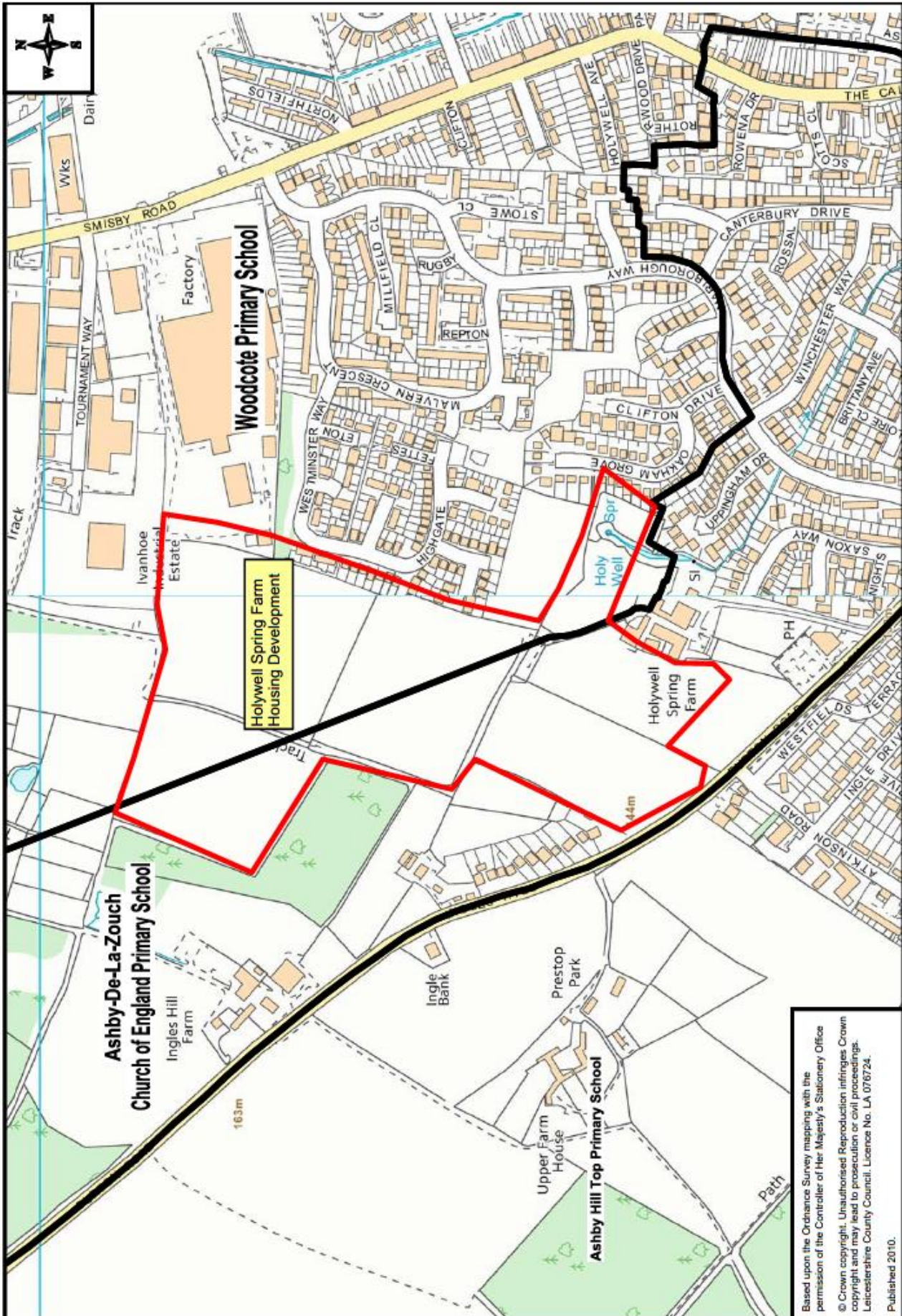


Proposed shared catchment area highlighted in red, children in this area will have equal joint catchment rights to either school:





Close-up of the proposed housing development.



PROPOSED NEW CATCHMENT IN ASHBY.

